

Welcome: Board Members 20 Shaft

5 December 2013



Agenda



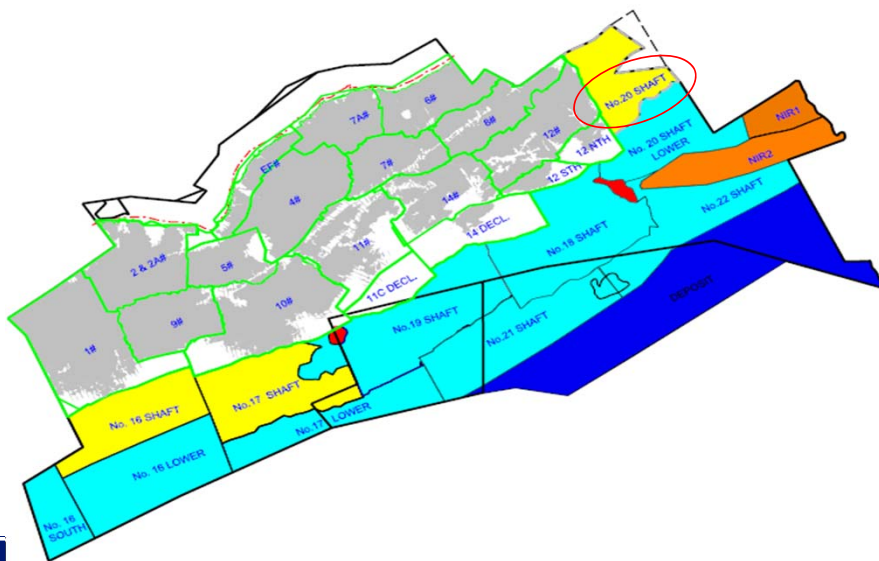
- Project Scope and Progress
- Infrastructure
- Current Status
 - Safety
 - Production
- Questions

We respect, care and deliver

Project Scope



Impala lease area – Greenfields projects



20 Shaft Project

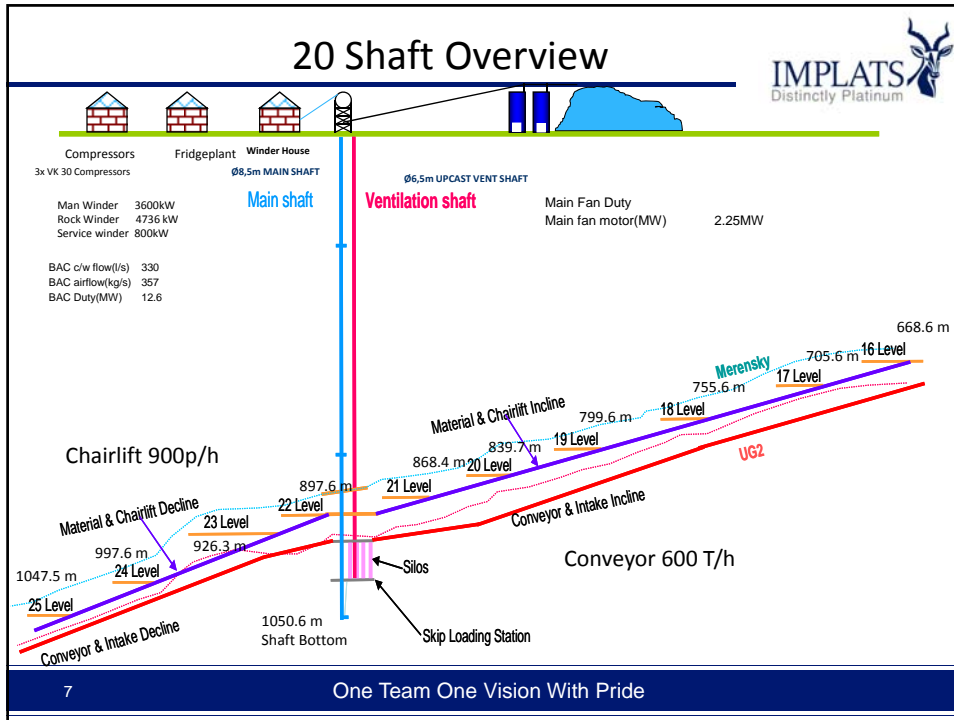


20 Shaft Overview

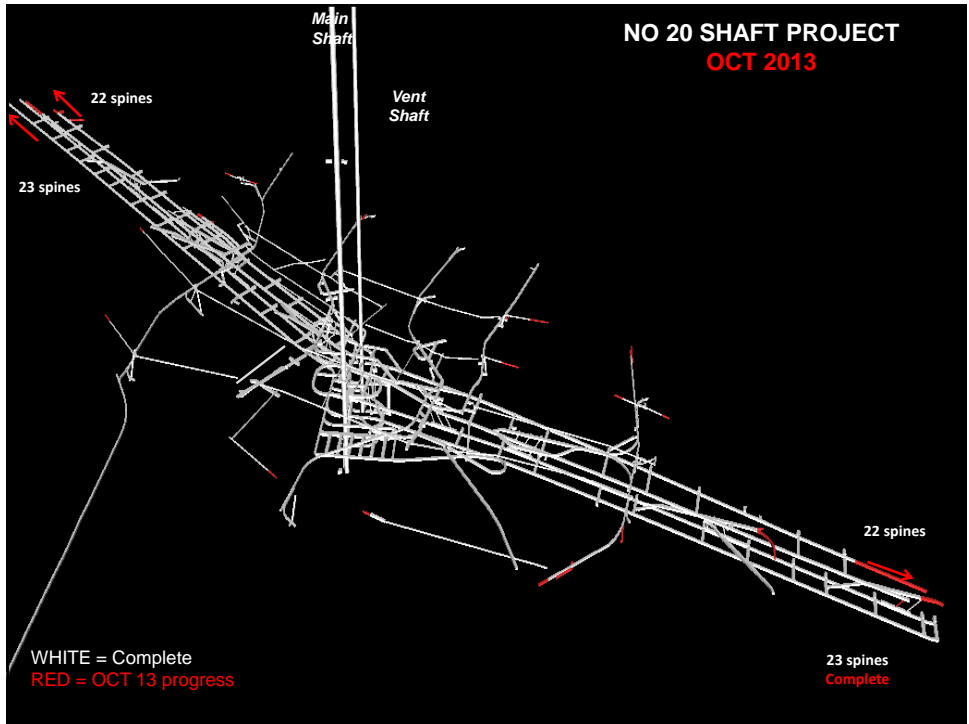


- | | |
|--|--|
| <ul style="list-style-type: none"> • Project Start <ul style="list-style-type: none"> - October 2004 • Main Shaft <ul style="list-style-type: none"> - 8.5m diameter 1050m deep • Ventilation Shaft <ul style="list-style-type: none"> - 6.5m diameter 1000m deep • Production <ul style="list-style-type: none"> - 145 000 reef tons/month - 8 levels trackbound Merensky - 2 levels trackless Merensky - First production January 2011 - Currently stoping 1500tonnes/day in buildup phase | <ul style="list-style-type: none"> • Winders <ul style="list-style-type: none"> - 4.78MW Rock DD - 18ton skips - 3.6MW Man/material DD - 0.8MW Service DD • Headgear height <ul style="list-style-type: none"> - 50m • Ventilation and Cooling <ul style="list-style-type: none"> - 650kg/s airflow - 12.6MW cooling fridge plant • Conveyor - 600tonnes/hour • Chairlift - 900person/hour |
|--|--|

We respect, care and deliver



Project Infrastructure



Winder House



One Team One Vision With Pride

20 Shaft Sub-terrain Intake System



One Team One Vision With Pride

No 20 Shaft – Infrastructure D2 belt extention



22 Level Monorail



No 20 Shaft – Monorail



19 Level Station Loop Being Supported



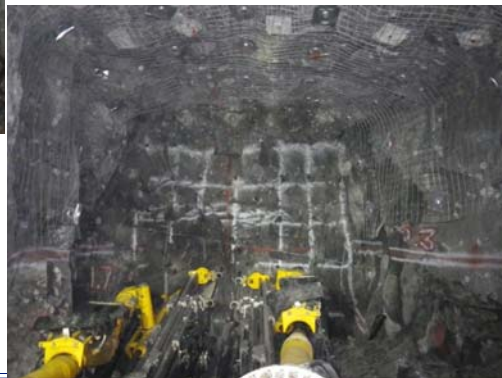
We respect, care and deliver

23 Level Rail Bound Rig Drilling Face



We respect, care and deliver

21 Level Hagg Loader Project



We respect, care and deliver


Current Status



Safety



Safety Statistics



Achievements:

- 1 Million Fatality free shifts on 03 June 2011
- 1 Million Fatality free shifts on 08 March 2013

Section	Days	Date Qualified
<i>July</i>		
204	540	13.07.13
203	90	11.07.13
206	360	17.07.13
<i>September</i>		
PLATCRO	540	12.09.13
M&R	360	28.09.13
<i>October</i>		
203	180	10.10.13
206	450	11.10.13
ENG TM3	90	22.10.13
204	90	19.11.13

Section	Days	Date Qualified
<i>July</i>		
Eng	90	10.07.13
Services	180	07.09.13
<i>September</i>		
2010	90	31.08.13
<i>October</i>		

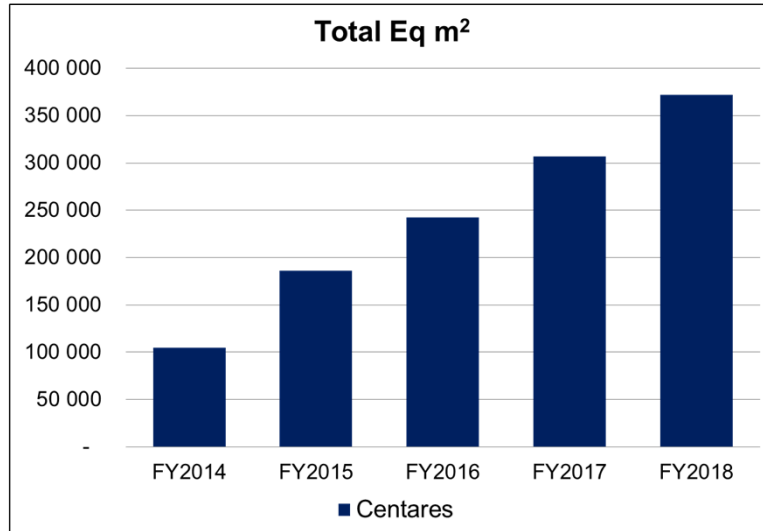
We respect, care and deliver

Production





20 Shaft: Forecast 5 Year Build-up



We respect, care and deliver

Questions?

