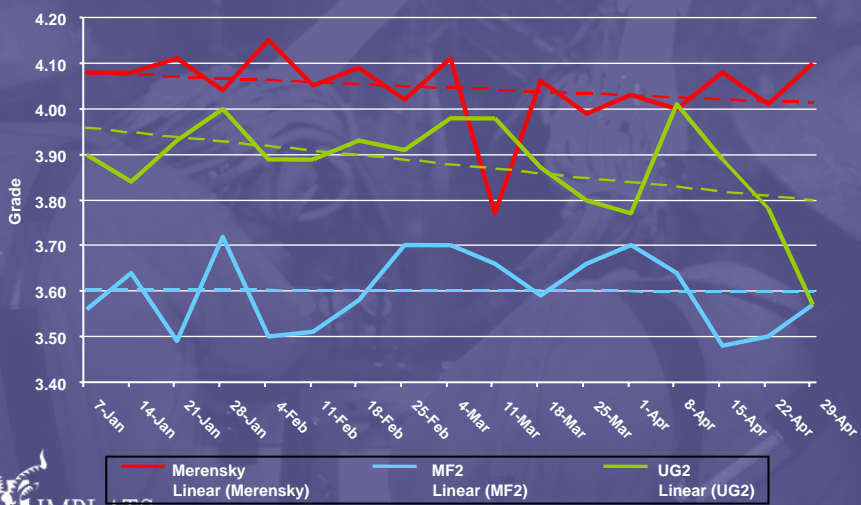


Grade optimisation – Anton Wheeler



Grade concern



Effect of dilution

Err OB (tons)	161 012
Ext Width (tons)	125 128
Off Reef (tons)	47 426
Total Tons	333 566
Grade (g/t)	0.65
Mill Tons	1 137 471
% Dilution	29.3



Grade initiatives – what we did

- ❖ Appoint FIXCO champion
- ❖ Introduction of Grade Observer per MO-section
- ❖ Grade presentations to all mining personnel
- ❖ All service departments assist in quality mining (Sampling, Survey, Rock Mechanics, Ventilation and Geology)
- ❖ Training of production crews - parameters (Grade Observer)
- ❖ Project on face drilling discipline



Grade initiatives – what we did

- ❖ Low grade UG2 development tons to waste
- ❖ Reduced in-stope development dimensions
- ❖ Separate ore types (UG2 and Merensky)
- ❖ Increasing panel lengths
- ❖ Raise line stope box value plans
- ❖ New technology stope support to stop FOGs (Durapack).
- ❖ Increased stope observations by Sampling Department.



Grade improvement

